



Discover the Benefits of **LAND SURVEYING IN THE CLASSROOM**

REAL-WORLD APPLICATION



Explore practical applications of mathematics, geometry, and trigonometry in various professions through land surveying.

PROBLEM-SOLVING SKILLS

Develop critical thinking by solving complex problems in measurement, spatial relationships, and data analysis.



INTERDISCIPLINARY LEARNING



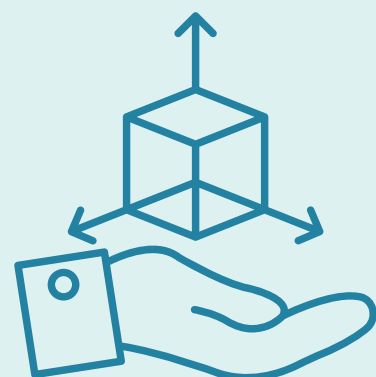
Connect STEM subjects with history, civics, economics, art, and design to understand the broader implications of surveying.

CAREER EXPLORATION

Ignite interest in STEM careers with exposure to surveying and related fields for informed academic and career decisions.



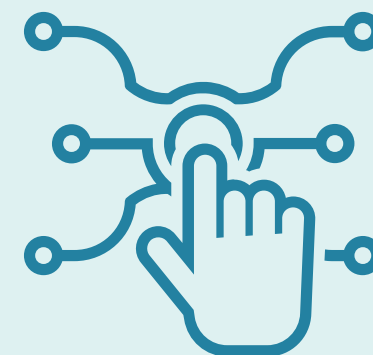
SPATIAL AWARENESS



Enhance understanding of three-dimensional space, valuable for careers in architecture, engineering, and urban planning.

HANDS ON LEARNING

Engage in interactive activities like using measuring tools, collecting outdoor data, and map creation for deeper theoretical understanding.



HISTORICAL UNDERSTANDING



Understand the historical and cultural significance of land surveying in human societies and civilizations.

COMMUNITY INVOLVEMENT

Collaborate with local communities on surveying projects to make a positive impact.



ENVIRONMENTAL AWARENESS



Learn about environmental issues and land conservation through studying landscapes and features.

TECHNOLOGY INTEGRATION

Explore modern surveying techniques using advanced tools like GPS, GIS, and remote sensing.

